

# MERO Low Access Floor / Refurbishing

## Innovative solutions from one source

Development

Consulting

Planning

Manufacturing

Installation

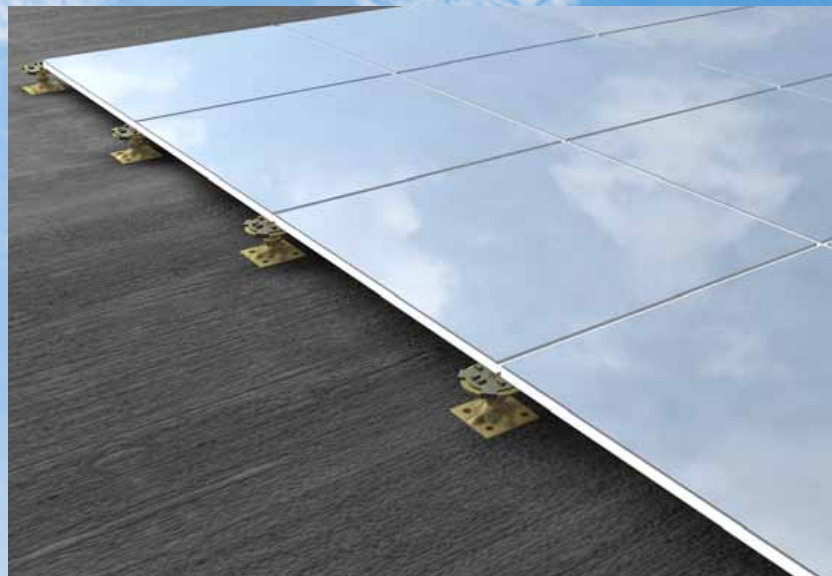
Access floor

Hollow floor

Floor covering and

Installation

Services



Floor systems

# Technical data: Low Access Floor

- Access to the installation plenum at any time and place without noise and dust as well as without disturbing the operational procedure.
- Huge installation plenum due to module 600x600 mm providing enough space for future under floor services.
- Floor panels with electrical outlets can be removed and reinstalled wherever necessary. Additional outlets can be made at any other place allowing easy adaption to office reconfigurations.
- Very low installation height
- Particularly suitable for refurbishing

Dimensions:	600 x 600 mm
Panel thickness: (without covering)	~ 17,8 mm
Surface:	galvanized steel sheet
Panel bottom:	galvanized steel sheet
System weight:	~ 40 kg/m <sup>2</sup>
(without covering, floor height 250 mm)	
Panel weight:	~ 13,5 kg/pc
Panel material:	fibre-reinforced calcium sulfate

## Substructure

Module:	600 x 600 mm
Pedestal material:	galvanized steel sheet
Construction height: (without covering)	from ~ 40 mm

## Load values

Concentrated load	2.000 N
Ultimate load:	> 4.000 N

## Electrostatic

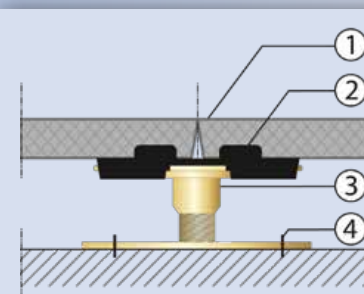
DIN EN 1081 / DIN IEC 61340-4-1	
depending on floor covering:	$R_2$ or $R_G > 10^5$ Ohm
without floor covering:	$R_2$ or $R_G > 10^9$ Ohm
	(conductive type on request)

## Fire protection

Building material class:	
acc. to DIN EN 13501 T1:	A1

## Thermal conductivity

Base material:	~ 0,44 W/mk
----------------	-------------



1. Access floor panel
2. Pedestal gasket
3. Access floor pedestal
4. Base plate glued to the subfloor, doweled on request



Head office:  
**MERO-TSK**  
**International GmbH & Co. KG**  
 Max-Mengeringhausen-Str. 5  
 97084 Würzburg, Germany

Postal address:  
**MERO-TSK**  
**International GmbH & Co. KG**  
 Product Division Floor Systems  
 Lauber Straße 11  
 97357 Prichsenstadt, Germany  
 Phone.: +49 (0) 93 83 203-603  
 Fax: +49 (0) 93 83 203-629  
 E-mail: bodensysteme@mero.de  
 Internet: www.mero.de